



Fact Sheet

CAN WOMEN HAVE IT ALL?



GUESTS:

Margie Warrell - As a mother of four and big sister of seven who grew up on a farm in rural Australia, Margie has taught leadership at NASA, chauffeured Formula 1 drivers, spoken at UN conferences, directed TV commercials in the jungles of PNG, and dispensed advice on America's most watched daily talk shows. The author of *Find Your Courage* (McGraw-Hill), she's also co-authored two other books with renowned experts Stephen Covey, Jack Canfield, Ken Blanchard and John Gray. Her latest book *Stop Playing Safe* (Wiley) was released in March 2013.

Sasha Allan - Sasha started her career in commercial law working for corporate firms in litigation. She is married and has two boys. She discovered that litigation means working 24 hours for barristers and decided to work as a solicitor for local government. She currently works full time.

STATISTICS:

- **WOMEN'S EMPLOYMENT BY AGE**

A range of factors influence a woman's decision to seek employment through life cycle stages as well as the type of job she would consider. These factors include age, educational qualifications, family/caring commitments, financial security and the availability of suitable child care and suitable work.



Fact Sheet

For example, women with very young children may seek part-time employment, as might some older women as they approach retirement. Women with school-aged children may also curtail their labour force participation, but to a lesser degree. Some women may return to, or take up paid employment following separation or divorce.

- In the 25 years since 1979, the proportion of women who were employed increased for all age groups. However, the pattern across age groups has changed slightly. In 1979, the proportion of women who were employed was highest among women aged 20–24 years (63%) and women aged 40–44 years (57%). There was also a noticeable trough in the proportion of women who were employed at the prime childbearing years of 25–34 years.

	1979		2004	
	'000	%	'000	%
Employed				
• Full-time	1 428.5	26.2	2 362.5	28.8
• Part-time	749.7	13.8	1 951.5	23.8
• Total	2 178.3	40.0	4 314.0	52.6
Unemployed	194.3	3.6	258.8	3.2
Not in the labour force	3 071.1	56.4	3 621.7	44.2
Women aged 15 years or over	5 443.7	100.0	8 194.5	100.0



Fact Sheet

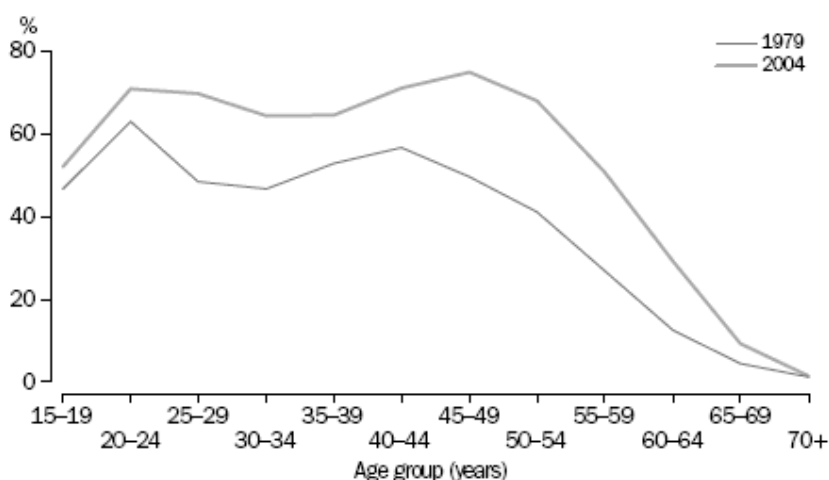
PROPORTION OF MEN AND WOMEN WHO WERE EMPLOYED



(a) As a proportion of the civilian population aged 15 years or over for each group.

Source: *Labour Force, Australia, Detailed - Electronic Delivery, Monthly* (ABS cat. no. 6291.0.55.001).

PROPORTION OF WOMEN WHO WERE EMPLOYED



(a) As a proportion of the civilian population in each age group.

Source: *Labour Force, Australia, Detailed - Electronic Delivery, Monthly* (ABS cat. no. 6291.0.55.001).



Fact Sheet

WEB LINKS:

www.margiewarrell.com

REFERENCE:

<http://www.abs.gov.au/ausstats/abs@.nsf/7d12b0f6763c78caca257061001cc588/858bada39afb98dca2571b000153d73!OpenDocument>